

THE FIELD DETECTIVES

THE SEARCH FOR STATHERN HALL

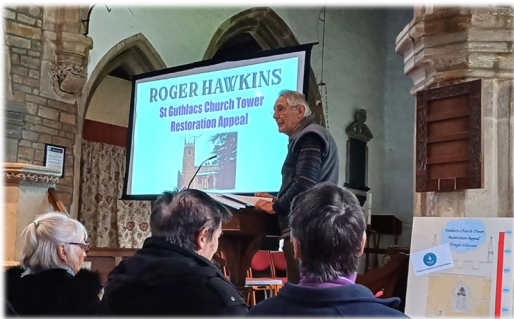
INVESTIGATION UPDATE #2

ST GUTHLAC'S CHURCH, STATHERN, LEICESTERSHIRE
SATURDAY 27TH APRIL 2024 11:00 AM - 1:00 PM

The Field Detectives shared their progress to date on the search for Stathern Hall to around 50 people at St Guthlac's Church. This was an opportunity for us to share our learning and for people to get involved with the Stathern Heritage Participation Programme.



The presentation revealed the most probable site of what initially had been described as a lost hall. A document written in Latin was discovered at the National Archives, London last year, which changed everything we had previously understood to be correct regarding the home of the regicide and parliamentarian soldier, Colonel Francis Hacker.

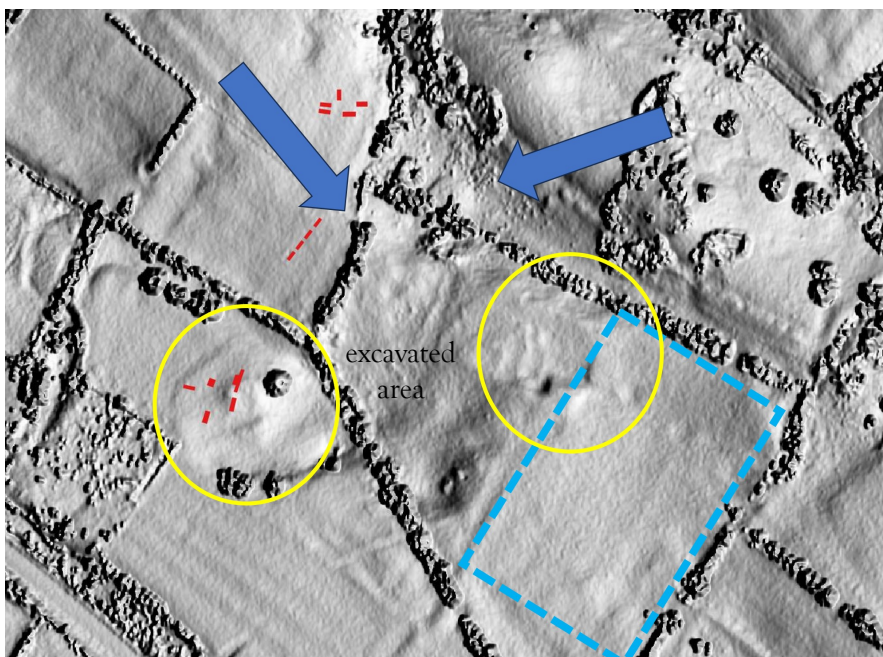


There were actually, two properties in the possession of the Hacker family at Stathern during the 17th century. One was a freehold property with 2 acres, his demesne and most probably where he lived, and the other was a leasehold 80 acre farm with a house; this would be the one just off Mill Hill, and the one we had previously assumed was Stathern Hall. In fact, there is no Stathern Hall; just a large farm house and a house somewhere in the village that we can now, with a high degree of confidence, call Hacker's House (documents refer to it as the Hall House).

There is still much to do both on and off the field. A comprehensive study of the older properties in the village would be the logical next step, and thanks to the kind invitation from a number of local people, we have an opportunity to pursue this avenue of investigation.

Off the field, we have before us a number of landscape investigation options to explore if we are to confirm our research findings, but, they will require permission from the Leicestershire and Rutland Wildlife Trust if we are to pursue them.

The map featured below, shows the areas of interest.



The two blue arrows denote the potential remains of the farm boundary walls. It would be useful to examine these in more detail.

The two areas denoted by the yellow circles warrant further investigation. The one on the left where the original FLAG trenches were dug, would benefit from further excavation.

By revealing this area in full, we should be able to establish whether or not, it was associated with the farm buildings that were taken away (see excavated area) as additional building materials for the rebuilding of Belvoir Castle c. 1660.